

Spare Parts Catalog

KOHLER Command PRO

HORIZONTAL CRANKSHAFT

CH980 - 2002



KOHLER
ENGINES

Specification



CH980-2002

- Idel Speed 1500 RPM/High Speed 3750 RPM

BASIC

Groups

01 - Air Intake/Filtration

02 - Blower Housing & Baffles

03 - Crankcase

04 - Crankshaft

05 - Decals

06 - Engine Controls

07 - Exhaust

08 - Fuel System

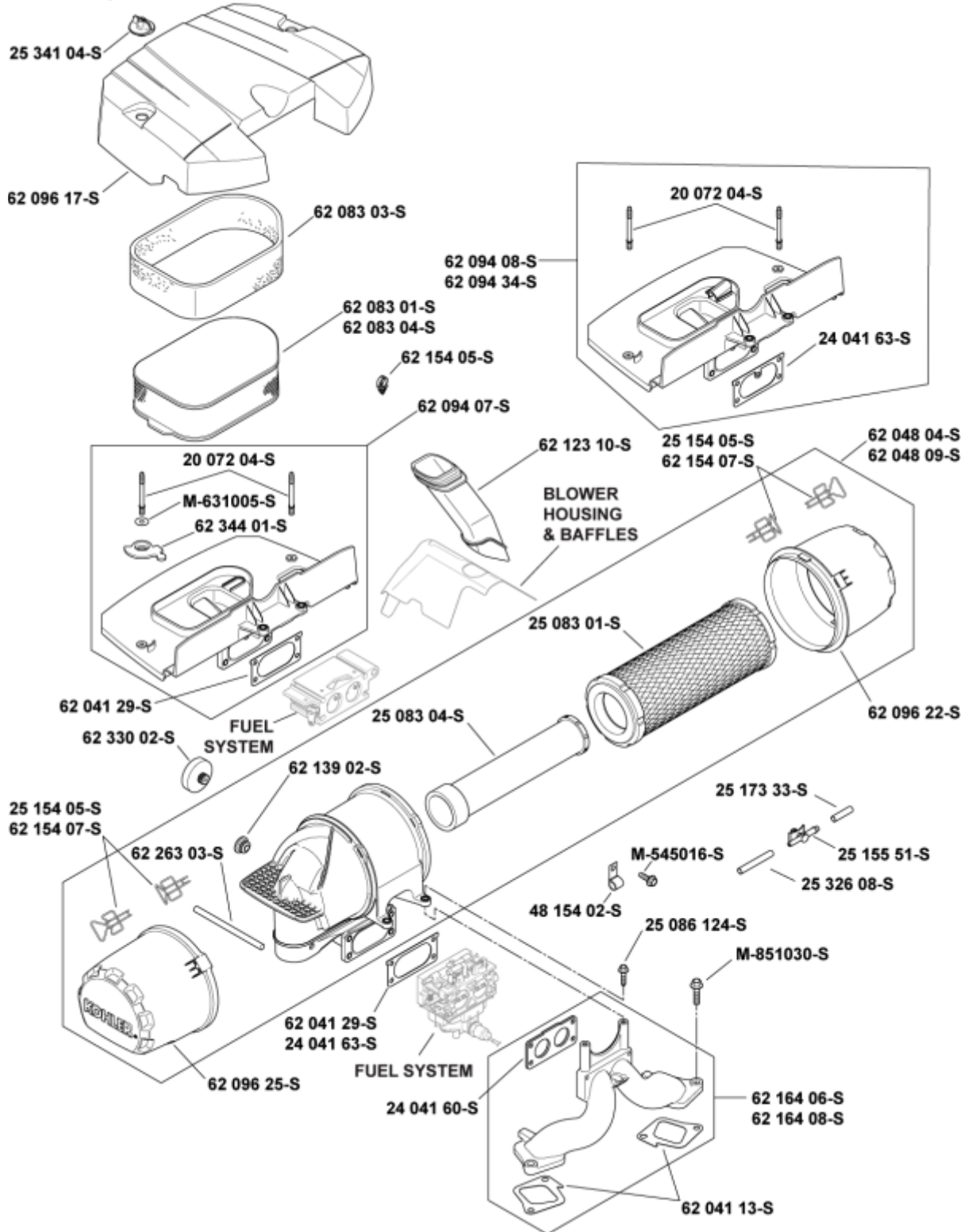
09 - Head/Valve/Breather

10 - Ignition/Electrical

11 - Oil Pan/Lubrication

12 - Starting System

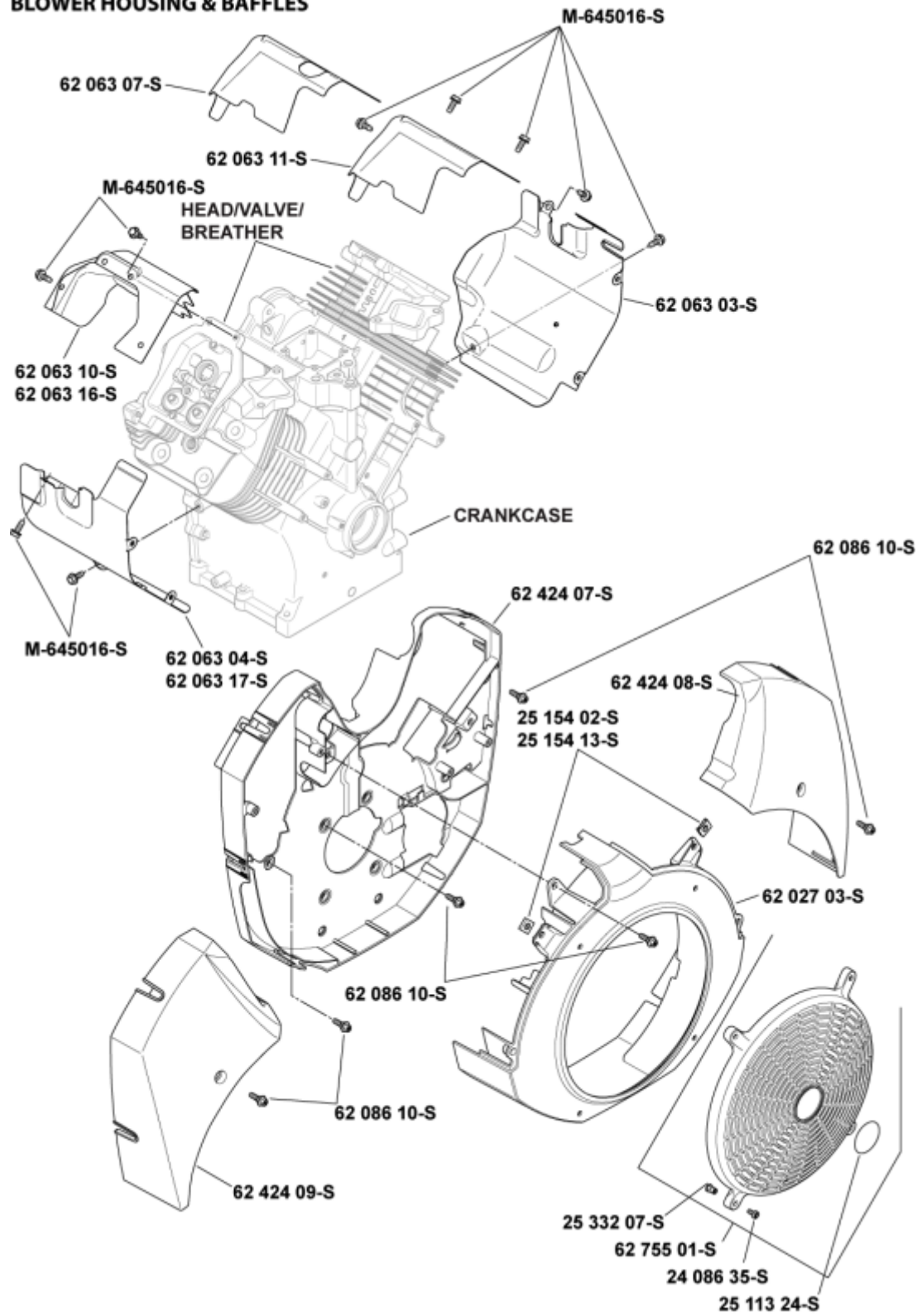
AIR INTAKE/FILTRATION



Air Intake Group 10-62-15

Ref #	Part	Description	Qty
	25 086 124-S	SCREW FLG M6X1.0X25	2
	62 041 29-S	GASKET AIR CLEANER ELBOW	1
	62 048 09-S	KIT AIR CLEANER	1
	M-851030-S	SCREW FLG M8X1.25X30	4
	62 041 13-S	GASKET INTAKE MANIFOLD	2
	62 164 06-S	KIT INTAKE MANIFOLD	1
	62 330 02-S	INDICATOR FILTER REPLACEMENT	1
	25 155 51-S	CONNECTOR EVAPORATIVE	1
	25 173 33-S	CAP MASKING	1
	25 326 08-S	HOSE EVAPORATIVE 20	1
	48 154 02-S	CLIP	1
	M-545016-S	SCREW FLG THD FRM M5X0.8X16	1
	62 096 22-S	COVER AIR FILTER	1
	62 154 07-S	CLIP ASSEMBLY	4
	25 083 01-S	ELEMENT AIR FILTER - PRIMARY	1
	25 083 04-S	ELEMENT AIR FILTER - SAFETY	1
	62 139 02-S	PLUG HOLE	1
	62 263 03-S	DAMPER FOAM INSERT	1
	62 096 25-S	COVER RAIN CAP	1

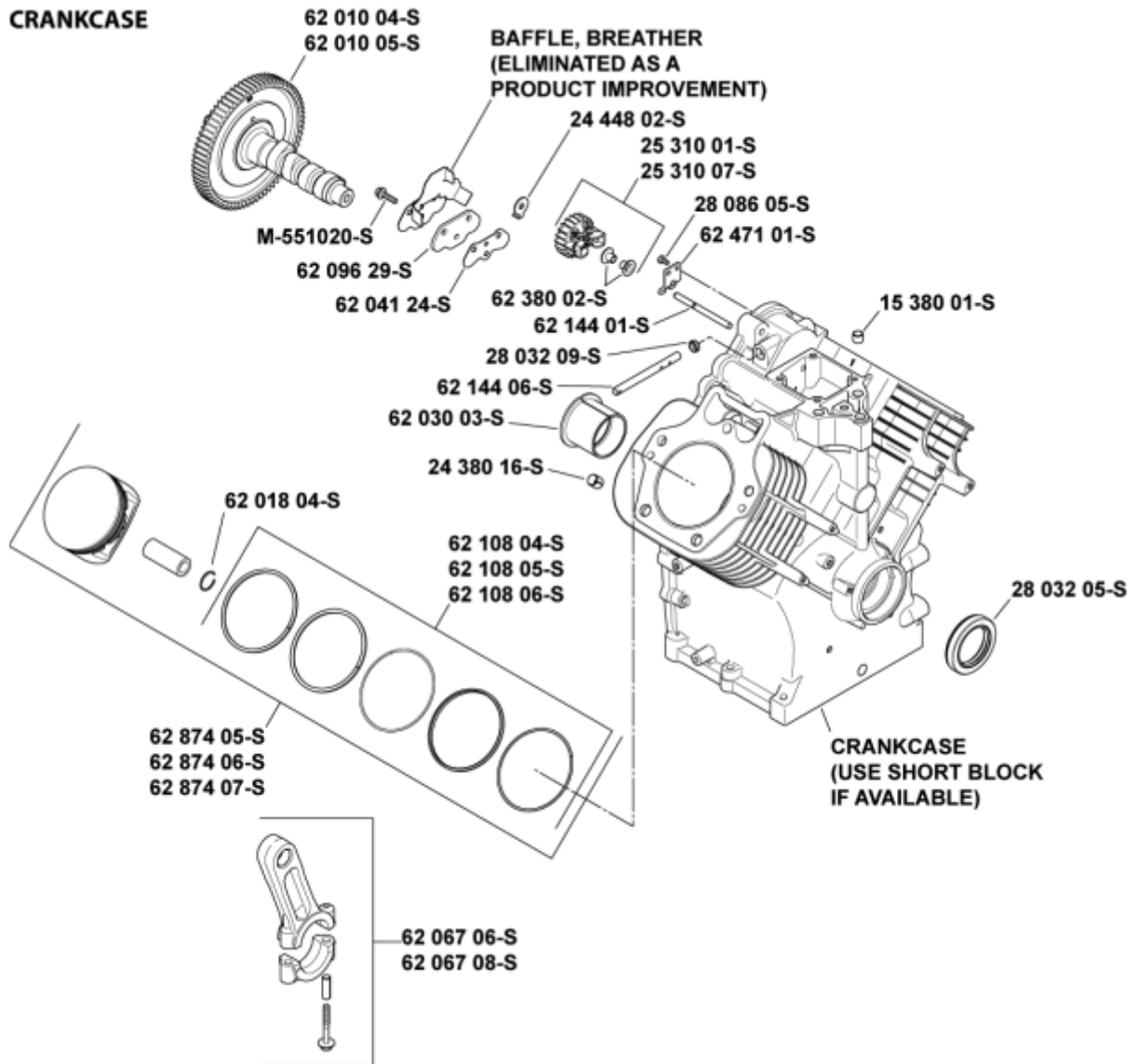
BLOWER HOUSING & BAFFLES



Blower Housing Group 6-62-12

Ref #	Part	Description	Qty
	25 154 13-S	CLIP BAFFLE MOUNTING	12
	62 027 03-S	KIT BLOWER HOUSING ASSEMBLY	1
	M-645016-S	SCREW FLG THD FRM M6X1.0X16	10
	62 424 07-S	SHROUD BACKING	1
	62 424 08-S	SHROUD #1 CYLINDER	1
	62 063 03-S	BAFFLE CYL BARREL #1 SIDE	1
	62 063 11-S	BAFFLE VALLEY #1 SIDE	1
	62 063 16-S	BAFFLE VALLEY #2 SIDE	1
	62 063 17-S	BAFFLE CYL BARREL #2 SIDE	1
	62 424 09-S	SHROUD #2 CYLINDER	1
	24 086 35-S	SCREW LBD SCKT PAN M5X0.8X10	4
	25 113 24-S	DECAL GRASS SCREEN	1
	25 332 07-S	INSERT THREADED	4
	62 755 01-S	KIT FIXED GUARD	1
	62 086 10-S	SCREW SHD THD FRM	18

CRANKCASE



Crankcase 2-62-3

Ref #	Part	Description	Qty
	62 010 05-S	CAMSHAFT KIT (includes 25 357 14-S)	1
	M-551020-S	SCREW HVY FLG M5X0.8X20	3
		BAFFLE, BREATHER (ELIMINATED AS A PRODUCT IMPROVEMENT)	1
	62 096 29-S	KIT COVER LIFTER FEED	1
	62 041 24-S	GASKET LIFTER FEED COVER	1
	24 448 02-S	TAB LOCKING	1
	25 310 01-S	GOVR GEAR ASSY USE 25 310 07-S (INCLUDES 62 380 02-S)	1
	62 380 02-S	PIN GOVERNOR REGULATING	2
	28 086 05-S	SCREW USE 25 086 143-S	2
	62 471 01-S	YOKE GOVERNOR	1
	15 380 01-S	PIN	3
		CRANKCASE (USE: SHORT BLOCK)	1
	28 032 05-S	SEAL OIL	1
	62 067 06-S	ROD, CONNECTING ASSY (STD) USE 62 067 09-S	2
	62 067 08-S	CONNECTING ROD (.25 OS) USE 62 067 10-S	2
	62 874 05-S	KIT PISTON ASSEMBLY (STD) (INCLUDES 62 018 04-S, 62 108 04-S)	2
	62 874 06-S	KIT PISTON ASSEMBLY (.25) (INCLUDES 62 018 04-S, 62 108 04-S)	1
	62 874 07-S	KIT PISTON ASSEMBLY (.50) (INCLUDES 62 018 04-S, 62 108 04-S)	
	62 018 04-S	RETAINER PISTON PIN	4
	62 108 04-S	RING SET (STD)	1
	62 108 05-S	RING SET (.25)	1
	62 108 06-S	RING SET (.50)	1
	24 380 16-S	PIN LOCATING	6
	62 030 03-S	BEARING CRANKSHAFT (FLYWHEEL)	1
	62 144 06-S	SHAFT GOVERNOR CROSS	1
	28 032 09-S	SEAL GOVERNOR CROSS SHAFT	1
	62 144 01-S	SHAFT GOVERNOR GEAR	1
	25 357 14-S	LUBRICANT CAMSHAFT NOT ILLUSTRATED	1

CRANKSHAFT

62 014 28-S

62 014 40-S

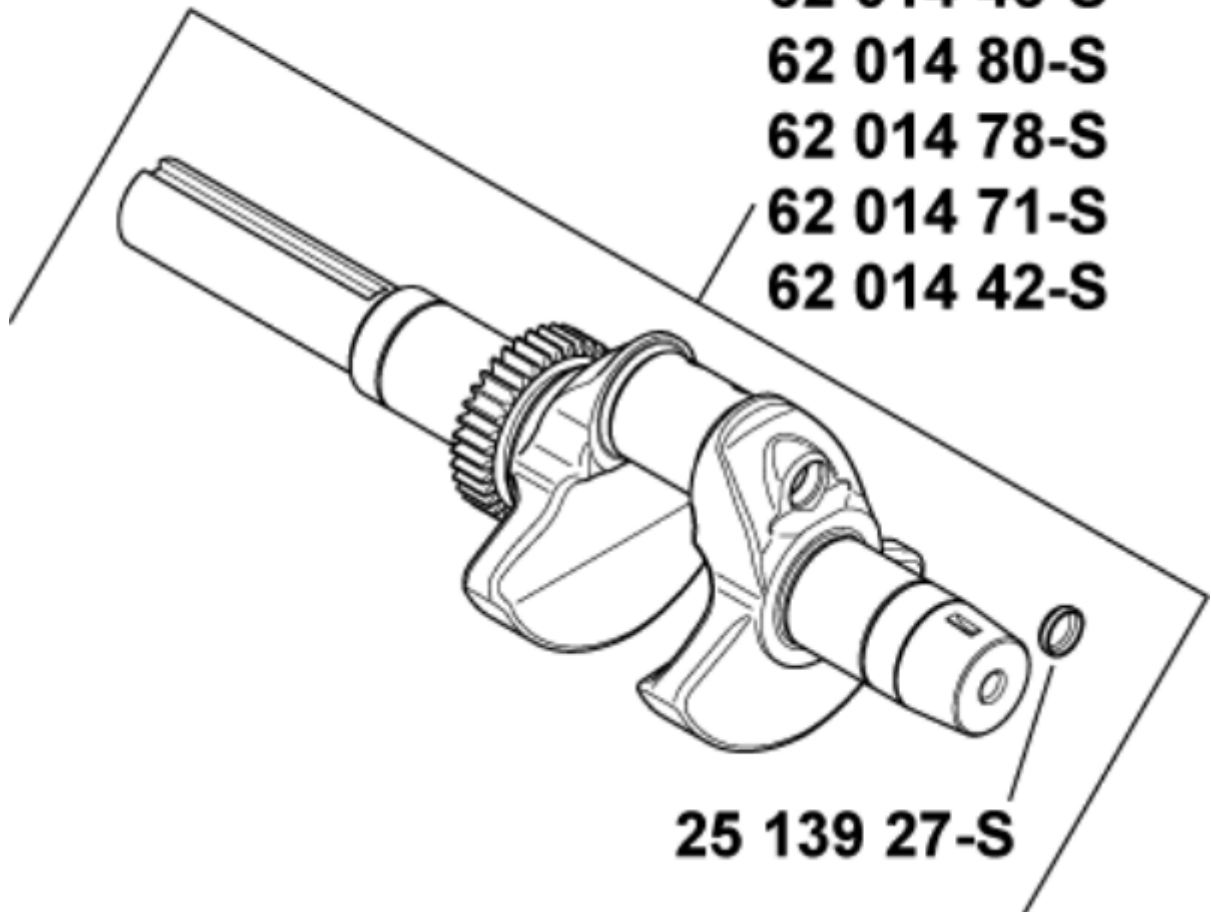
62 014 45-S

62 014 80-S

62 014 78-S

62 014 71-S

62 014 42-S

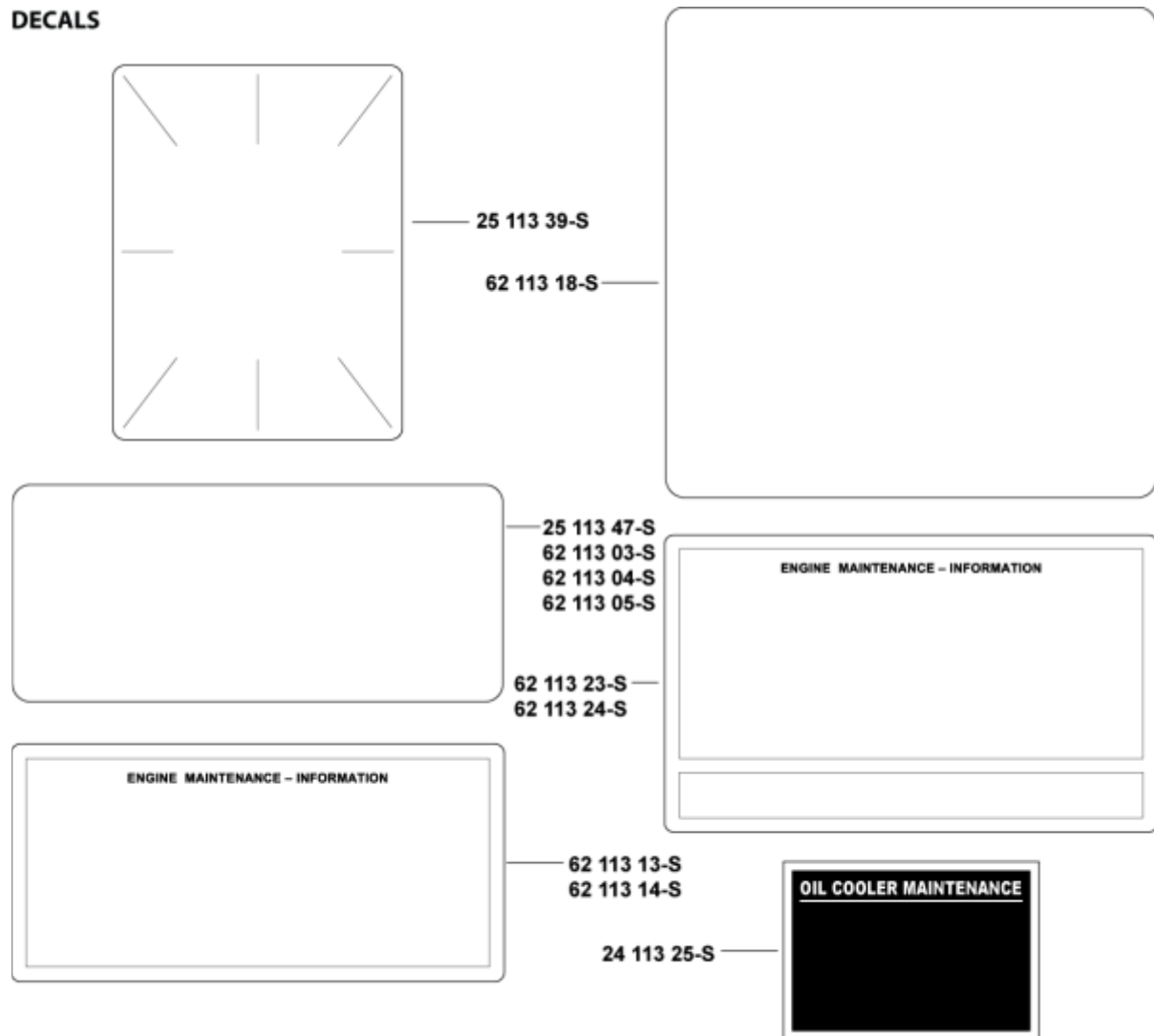


25 139 27-S

Crankshaft 1-62-2

Ref #	Part	Description	Qty
	62 014 28-S	CRANKSHAFT ASSEMBLY (includes 25 139 27-S)	1
	25 139 27-S	PLUG CUP	1

DECALS

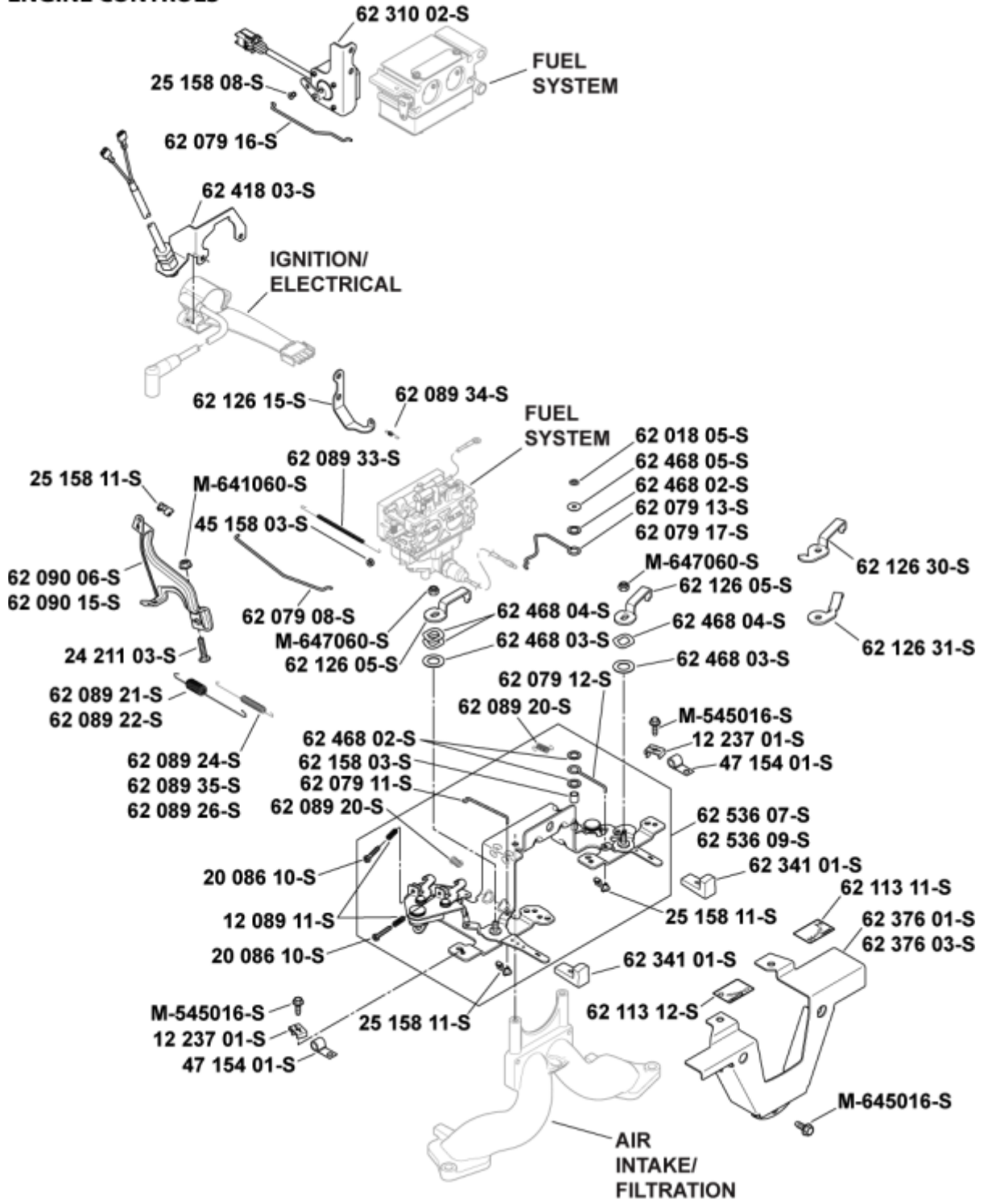


Artwork is representative.
Actual labels may differ depending on model and specification number.

Decals 12-62-6

Ref #	Part	Description	Qty
	25 113 39-S	DECAL CLEAR LAMINATE	1
	62 113 05-S	DECAL 38 HP	1
	62 113 13-S	USE 62 113 23-S	1
	24 113 25-S	DECAL OIL COOLER	1

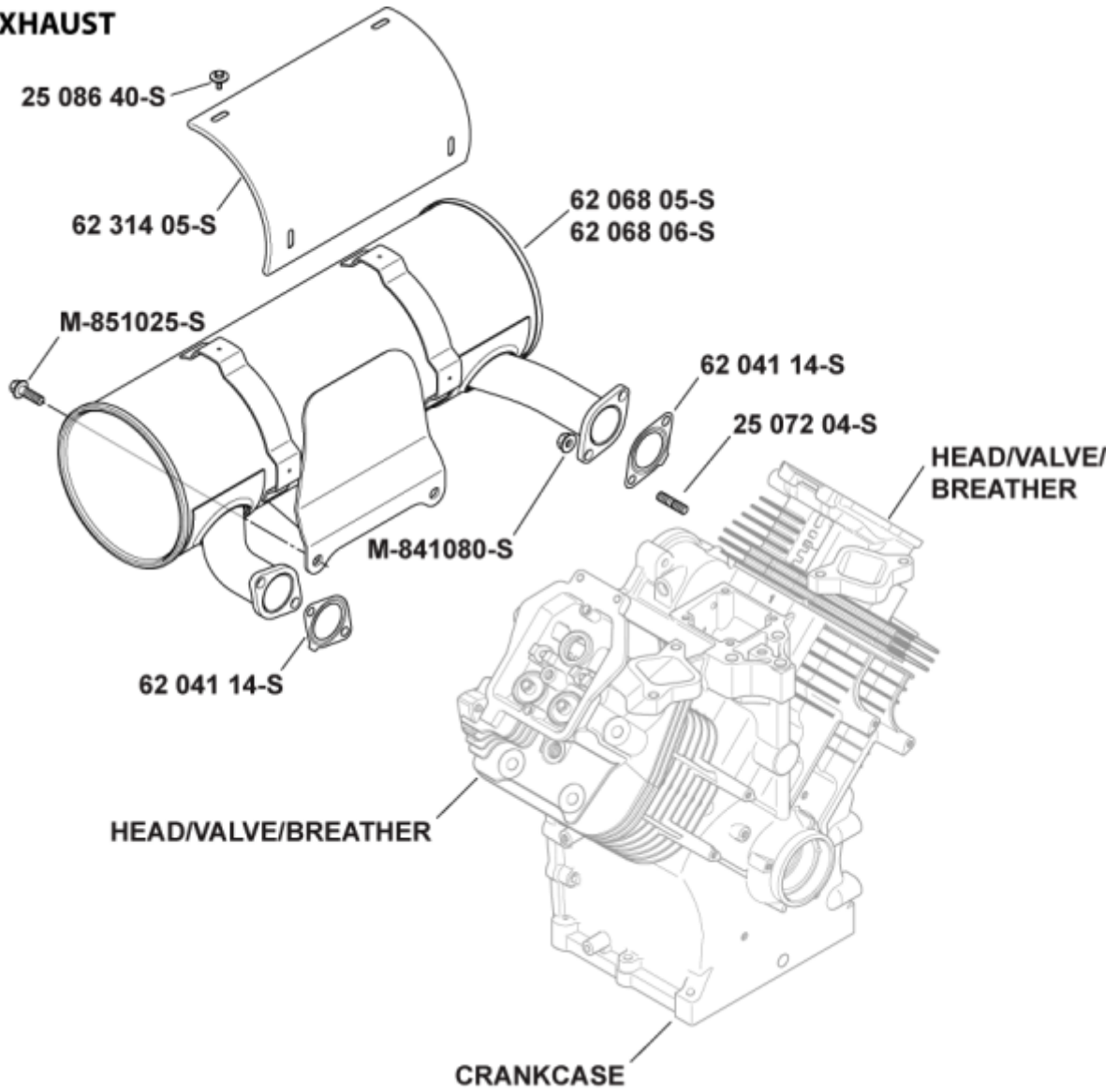
ENGINE CONTROLS



Engine Controls Group 9-62-31

Ref #	Part	Description	Qty
	62 089 34-S	SPRING CHOKE ASSIST	1
	24 211 03-S	BOLT RD HD SQ NECK M6X1.0X25	1
	62 018 05-S	RETAINER PALNUT	1
	62 079 17-S	LINKAGE CHOKE HORIZONTAL	1
	62 089 35-S	SPRING GOVERNOR	1
	62 090 15-S	KIT GOVER LEVER-CH940-980	1
	62 126 15-S	BRACKET CHOKE ASSIST	1
	62 468 02-S	WASHER NYLON	1
	M-641060-S	NUT FLG M6X1.0	1
	62 089 21-S	SPRING GOVERNOR IDLE	1
	62 468 05-S	WASHER STEEL	1
	12 237 01-S	CLAMP CABLE	2
	62 079 08-S	LINKAGE THROTTLE	1
	M-545016-S	SCREW FLG THD FRM M5X0.8X16	2
	62 089 33-S	SPRING LINKAGE	1
	25 158 11-S	BUSHING THROTTLE LINKAGE	1
	45 158 03-S	BUSHING	1
	62 536 13-S	CONTROL ASSEMBLY SPEED (HORIZONTAL)	1
	20 086 10-S	SCREW PHL THD FRM M4X0.7X25	2
	20 468 07-S	WASHER NYLON SHOULDER	3
	25 158 11-S	BUSHING THROTTLE LINKAGE	2
	62 079 11-S	LINKAGE THROTTLE LEVER	1
	62 079 12-S	LINKAGE CONTROL	1
	62 089 20-S	SPRING RETURN	2
	62 158 03-S	BUSHING	1
	62 468 02-S	WASHER NYLON	2
	M-931010-S	WASHER FLAT 9 MM	2

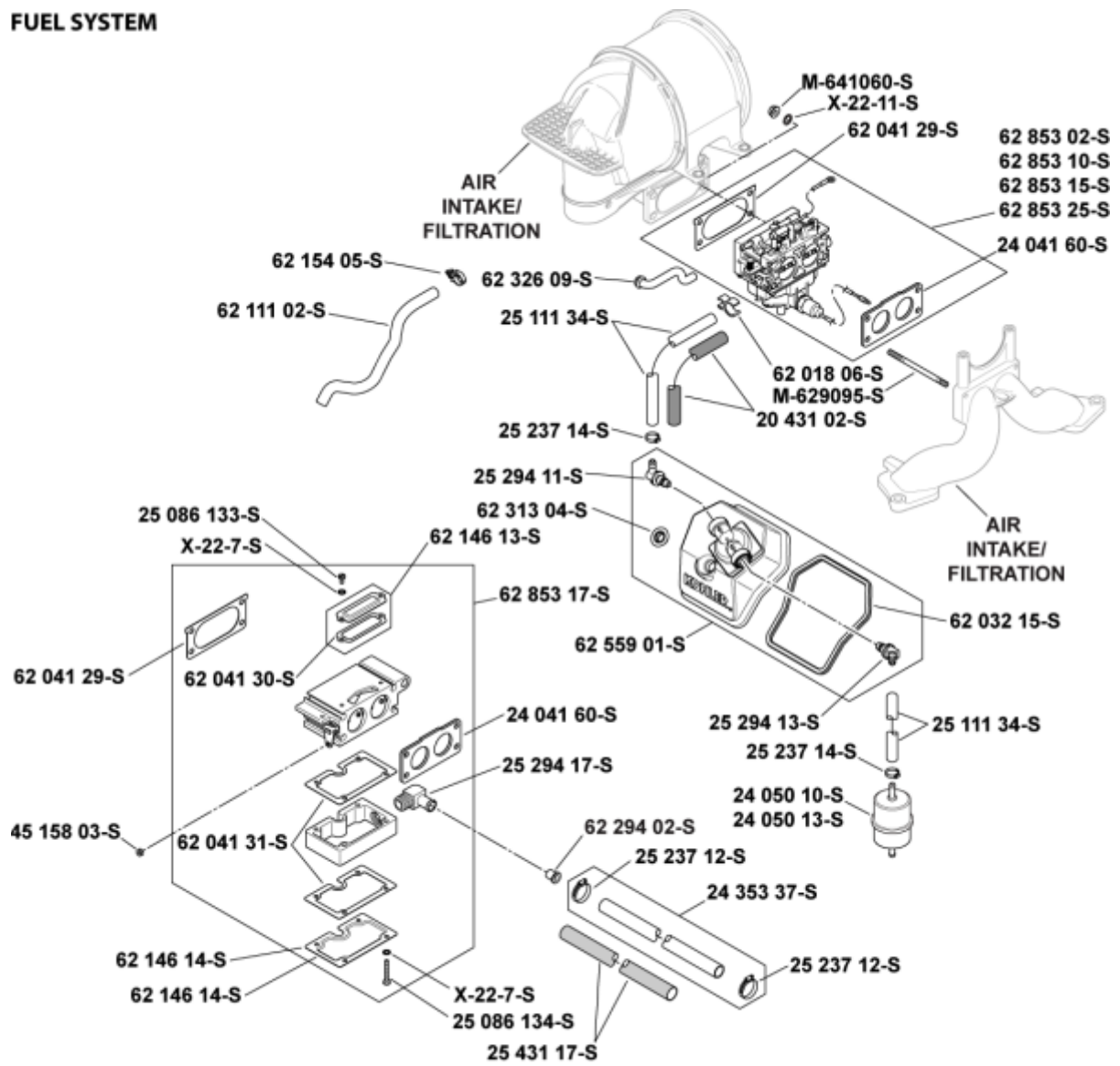
EXHAUST



Exhaust 11-62-2

Ref #	Part	Description	Qty
	M-841080-S	NUT FLG M8X1.25	4
	62 041 14-S	GASKET EXHAUST	2
	25 072 04-S	STUD USE 25 072 24-S	4

FUEL SYSTEM

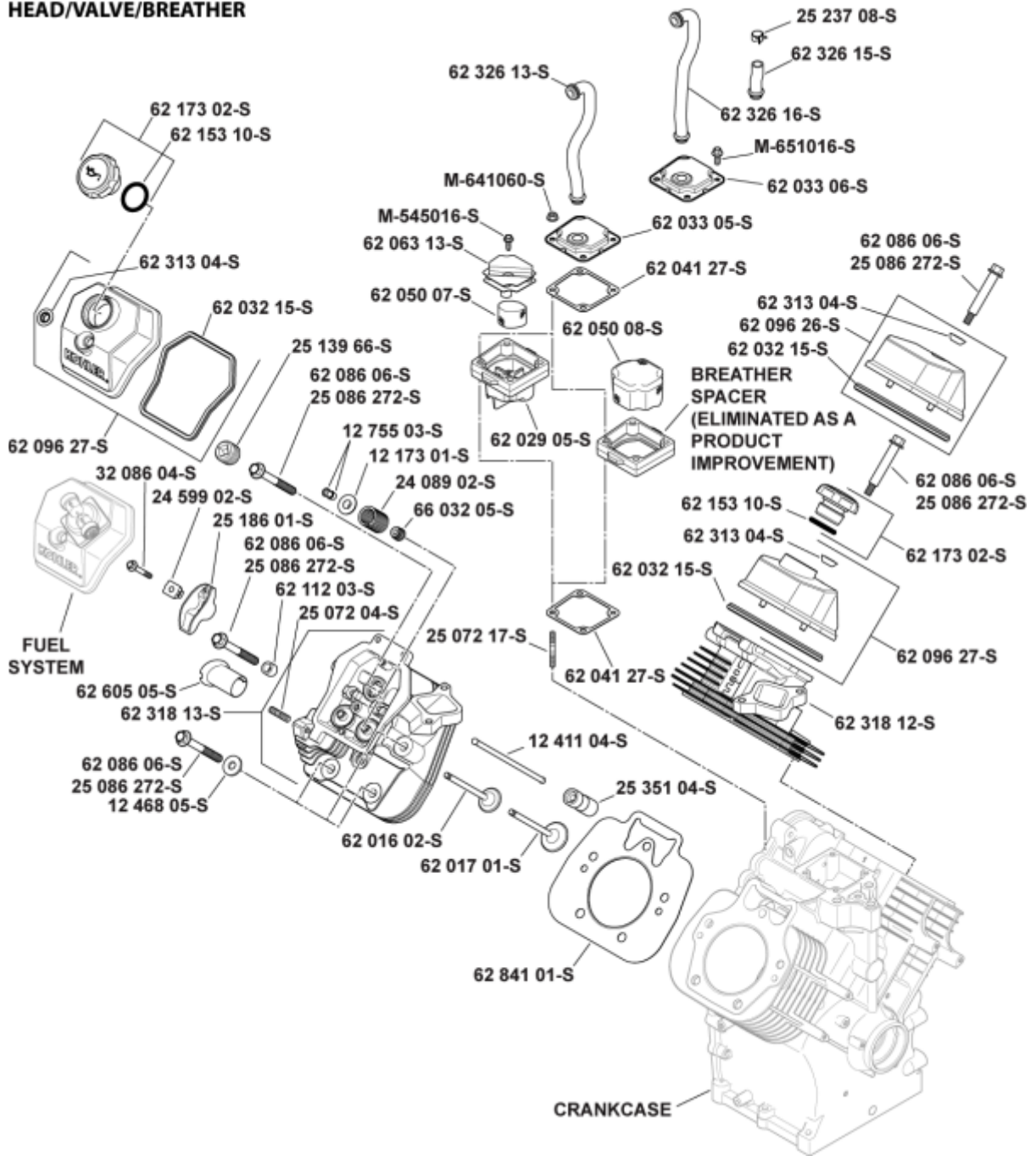


Individual Carburetor Repair Kits are listed by clicking on the notepad under the Carburetor Part Number

Fuel System

Ref #	Part	Description	Qty
	M-641060-S	NUT FLG M6X1.0	4
	X-22-11-S	WASHER INT TOOTH LOCK 1/4	1
	62 853 02-S	KIT CARBURETOR W/GASKETS (INCLUDES 24 041 60-S, 62 041 29-S. SERVICE WITH 24 757 50-S, 24 757 53-S, 24 757 54-S, 62 755 10-S, 62 755 11-S)	1
	62 041 29-S	GASKET AIR CLEANER ELBOW	1
	24 041 60-S	GASKET CARBURETOR	1
	M-629095-S	STUD M6X1.0X96	4
	62 326 09-S	HOSE CARBURETOR VENT	1
	62 018 06-S	RETAINER CLIP	2
	20 431 02-S	USE 25 431 12-S	1
	25 111 34-S	LINE, FUEL (24") USE 25 111 72-S	2
	25 237 14-S	CLAMP, HOSE 1/2" USE 25 237 31-S	4
	24 050 10-S	FUEL FILTER USE 24 050 13-S	1
	62 559 01-S	KIT FUEL PUMP (INCLUDES 25 141 06-S, 25 294 11-S, 25 294 13-S, 62 032 15-S, 62 313 04-S)	1
	25 294 13-S	KIT 45 DEG. FITTING (includes 25 141 06-S)	1
	62 032 15-S	SEAL USE 62 032 20-S	1
	62 313 04-S	GROMMET VALVE COVER SCREW	1
	25 294 11-S	KIT 90 DEG. FITTING (includes 25 141 06-S)	1
	25 141 06-S	TOOL INSTALLATION (SNAP RING) NOT ILLUSTRATED	1

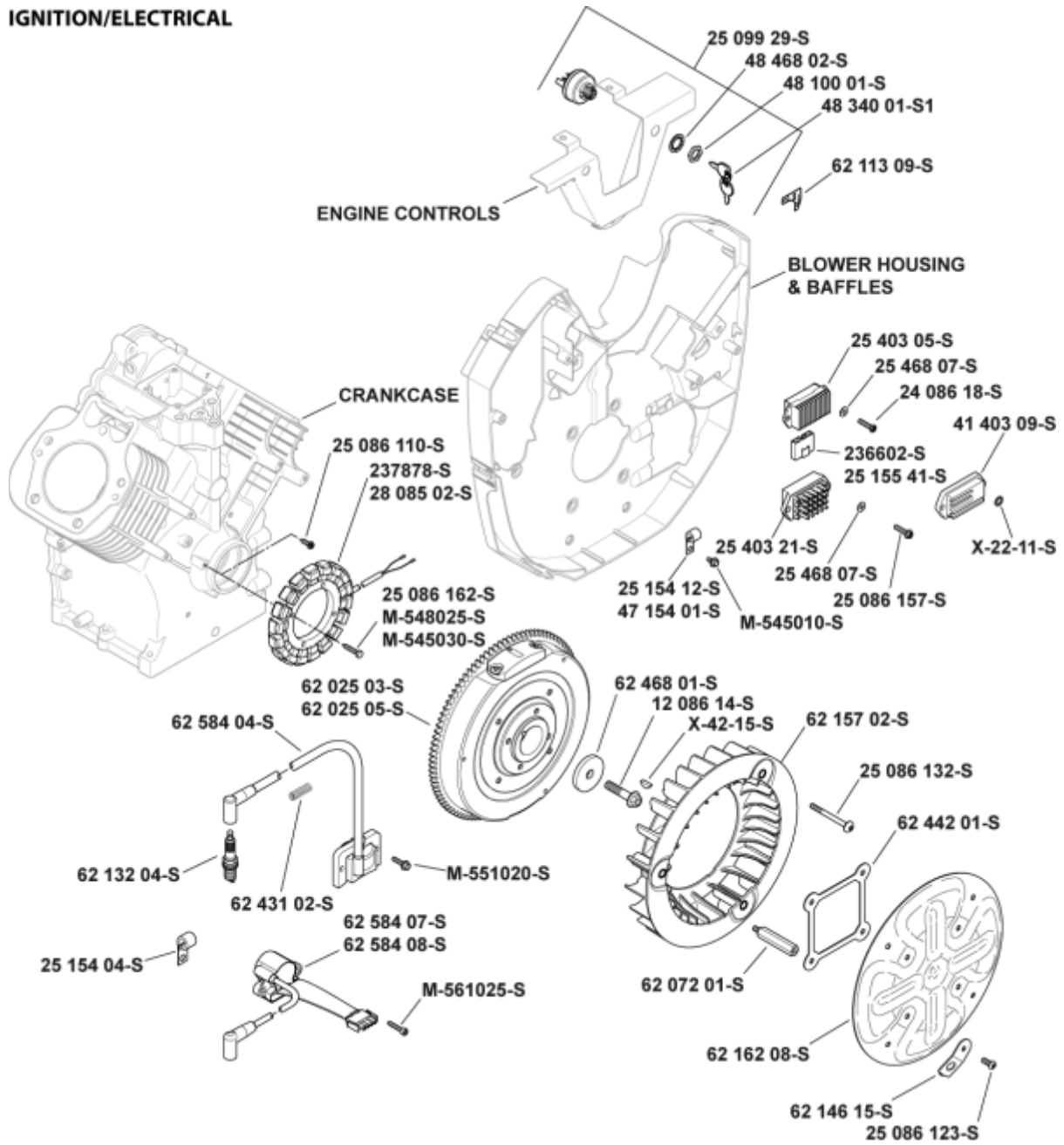
HEAD/VALVE/BREATHER



Head/Valve/Breather 4-62-2

Ref #	Part	Description	Qty
	62 086 06-S	SCREW USE 25 086 272-S	2
	62 173 02-S	CAP ASSY USE 62 173 03-S (INCLUDES 62 153 10-S)	1
	62 153 10-S	O-RING USE 62 153 11-S	
	62 096 27-S	KIT COVER VALVE (INCLUDES 62 313 04-S, 62 032 15-S)	1
	62 313 04-S	GROMMET VALVE COVER SCREW	2
	62 032 15-S	SEAL USE 62 032 20-S	2
	62 318 12-S	KIT CYLINDER HEAD #1 (INCLUDES 25 072 04-S [QTY2])	1
	62 841 01-S	KIT CYLINDER HEAD GASKET (includes 62 041 14-S, 62 041 13-S)	2
	62 017 01-S	VALVE INTAKE	2
	62 016 02-S	VALVE EXHAUST	2
	12 468 05-S	WASHER FLAT 13/32	6
	62 086 08-S	SCREW FLG M10X1.5X90	10
	62 605 05-S	LINER USE 62 605 07-S	2
	62 318 13-S	KIT CYLINDER HEAD #2 (INCLUDES 25 072 04-S [QTY2])	1
	25 072 04-S	STUD USE 25 072 24-S	4
	62 112 03-S	SPACER	2
	25 186 01-S	ARM ROCKER	4
	24 599 02-S	PIVOT ROCKER ARM	4
	32 086 04-S	SCREW FLG M6X1.0X45	4
	25 139 66-S	PLUG PIPE 3/4 NPTF SQ CTSK	2
	12 755 03-S	KIT RETAINER	4
	12 173 01-S	VLVE SPRING CAP USE 25 173 28-S	4
	24 089 02-S	SPRING VALVE	4
	66 032 05-S	SEAL VALVE STEM	4
	12 411 04-S	ROD PUSH	4
	25 351 04-S	LIFTER USE 25 351 10-S (includes 25 357 14-S)	4
	25 072 17-S	STUD, M6X1.0X53 - DISCONTINUED	4
	62 041 27-S	GASKET BREATHER	2
	62 029 05-S	BREATHER ASSY USE 62 033 06-S (Before S/N 3707100011)	1
	62 050 07-S	BREATHER ASSY USE 62 033 06-S (Before S/N 3707100011)	1
	62 063 13-S	BREATHER ASSY USE 62 033 06-S (Before S/N 3707100011)	1
	M-545016-S	SCREW FLG THD FRM M5X0.8X16	1
		SPACER, BREATHER (ELMINATED AS A PRODUCT IMPROVEMENT)	1
	62 050 08-S	FILTER BREATHER (After S/N 3707100001)	1
	62 033 05-S	BREATHER ASSEMBLY	1
	M-641060-S	NUT FLG M6X1.0	4
	62 326 13-S	BREATHER HOSE USE 62 326 16-S	1
	62 033 06-S	KIT BREATHER ASSEMBLY (INCLUDES 62 041 27-S [QTY1], 62 050 08-S, M-651016-S, 62 326 16-S)(AFTER S/N 3718400001)	1
	M-651016-S	SCREW FLG M6X1.0X16 (After S/N 3718400001)	4
	62 326 16-S	HOSE BREATHER H/S (After S/N 3718400001)	1
	62 755 03-S	KIT CYL HEAD HARDWARE-HORIZ NOT ILLUSTRATED (Services 1 Head. Quantities listed are for both heads) (Includes items 9,10,17-19,21-25)	2
	25 357 14-S	LUBRICANT CAMSHAFT NOT ILLUSTRATED	1
	62 041 14-S	GASKET EXHAUST NOT ILLUSTRATED	2
	62 041 13-S	GASKET INTAKE MANIFOLD NOT ILLUSTRATED	2

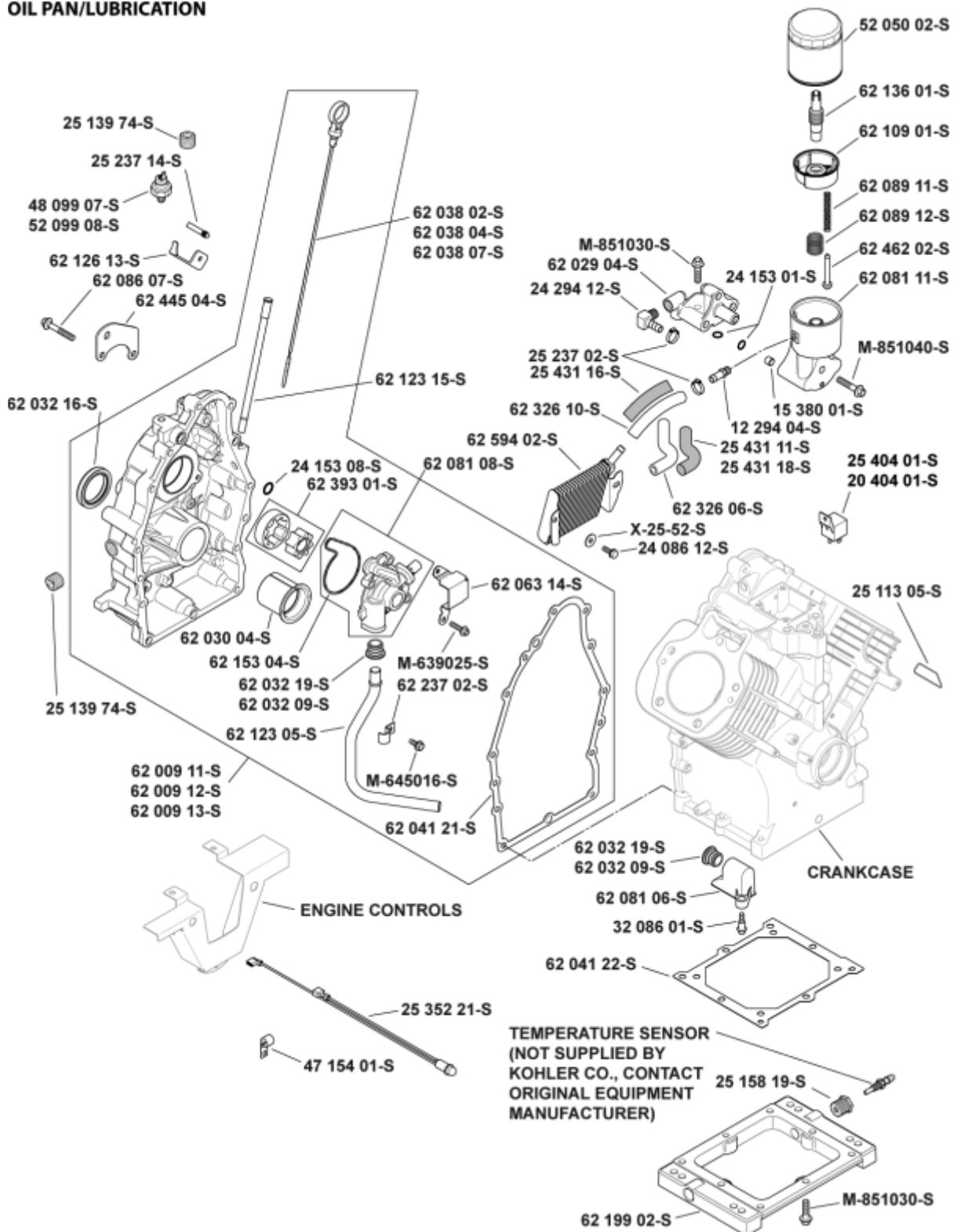
IGNITION/ELECTRICAL



Ignition/Charging Group 5-62-4

Ref #	Part	Description	Qty
	25 403 05-S	REG/RECT USE 25 403 20-S	1
	25 468 07-S	WASHER FLAT 7/32	2
	24 086 18-S	SCREW PHL HD #11-16X7/8	2
	236602-S	CONNECTOR USE 25 155 41-S	1
	47 154 01-S	CLIP CABLE	1
	M-545010-S	SCREW FLG THD FRM M5X.8X10	1
	28 085 02-S	KIT 25 AMP STATOR ASSY. (includes 25 452 01-S)	1
	25 086 162-S	SCREW THD FRM M5X0.8X30	2
	62 584 04-S	MODULE IGNITION	2
	M-551020-S	SCREW HVY FLG M5X0.8X20	4
	62 025 03-S	FLYWHEEL ASSEMBLY	1
	62 468 01-S	WASHER FLAT 13/32	1
	12 086 14-S	SCREW, FLG M10X1.5X45 USE 25 086 361-S	1
	X-42-15-S	KEY 3/16 X 5/8	1
	62 157 02-S	FAN FRONT DRIVE ADAPTER HOLE	1
	25 086 132-S	SCREW TRS HD M6X1.0X65	3
	62 442 01-S	STIFFENER GRASS SCREEN	1
	25 086 123-S	SCREW BUTTON HD M6X1.0X16	4
	62 146 15-S	PLATE GRASS SCREEN WASHER	4
	62 162 08-S	KIT GRASS SCREEN	1
	62 072 01-S	STUD GRASS SCREEN	4
	25 154 04-S	CLIP CABLE	1
	62 132 04-S	PLUG SPARK	2
	62 431 02-S	SLEEVE CORRUGATED	2
	12 454 03-S	TIE CABLE NOT ILLUSTRATED	1
	24 518 12-S	LEAD NOT ILLUSTRATED	1
	25 452 01-S	TERMINAL NOT ILLUSTRATED	1
	25 454 07-S	TIE	3
	62 176 03-S	HARNESS WIRING NOT ILLUSTRATED	1
	62 518 01-S	LEAD B+ TO STARTER SOLENOID NOT ILLUSTRATED	1

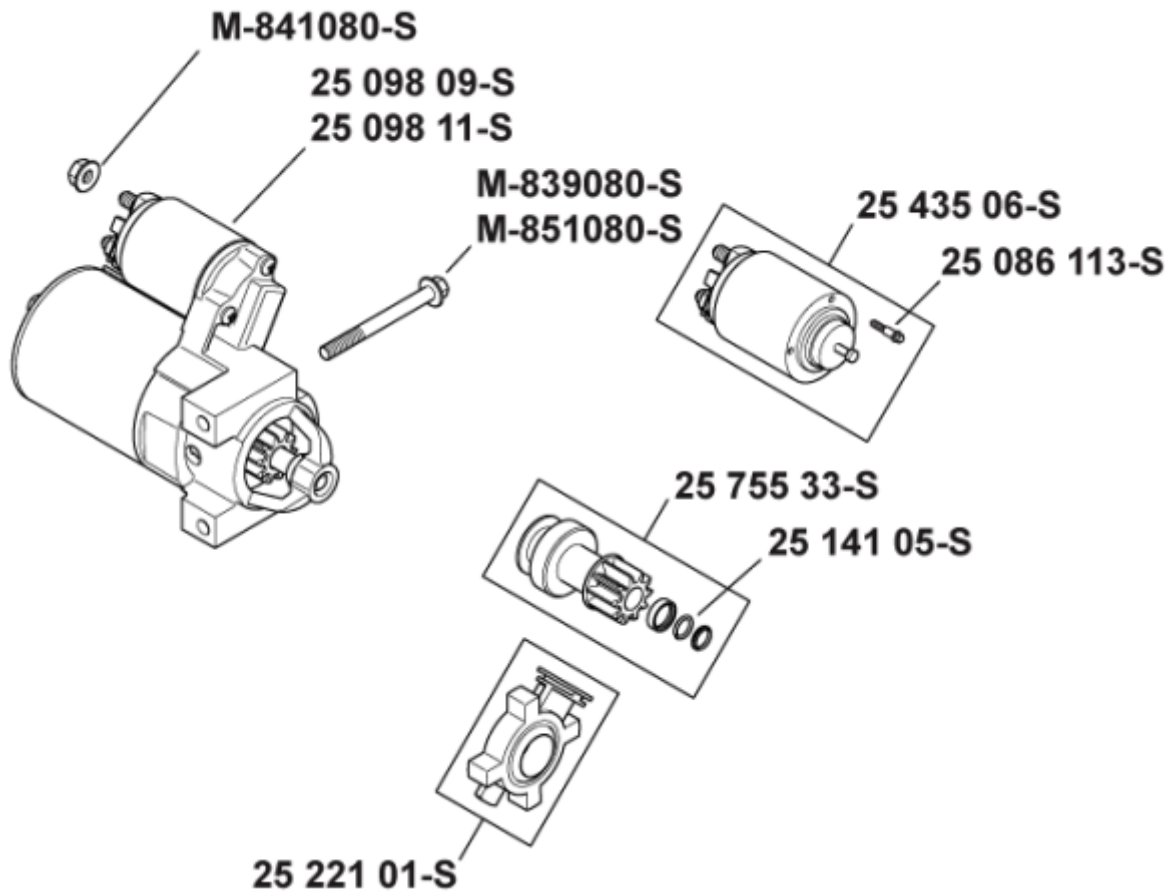
OIL PAN/LUBRICATION



Oil Pan/Lubrication 3-62-7

Ref #	Part	Description	Qty
	52 050 02-S	FILTER OIL	1
	62 136 01-S	NIPPLE OIL FILTER	1
	62 109 01-S	CUP OIL FILTER	1
	62 089 11-S	SPRING OIL FILTER VALVE	1
	62 089 12-S	SPRING OIL FILTER CUP	1
	62 462 02-S	VALVE OIL FILTER	1
	62 081 11-S	HOUSING HORIZONTAL OIL FILTER	1
	M-851040-S	SCREW FLG M8X1.25X40	1
	15 380 01-S	PIN	3
	12 294 04-S	FITTING HOSE TO PIPE	1
	25 431 11-S	SLEEVE USE 25 431 12-S	1
	62 326 06-S	HOSE OIL SUPPLY	1
	X-25-52-S	WASHER FLAT 1/4	2
	24 086 12-S	SCREW TAP M6X1.7X18	2
	62 041 22-S	GASKET OIL RESERVOIR	1
	62 199 02-S	KIT OIL RESERVOIR	1
	M-851030-S	SCREW FLG M8X1.25X30	9
	32 086 01-S	SCREW SHD THD FRM M6X.0X6.5	1
	62 081 06-S	HOUSING OIL PICK-UP ASSEMBLY	1
	62 032 09-S	SEAL USE 62 032 19-S	2
	62 009 12-S	KIT CLOSURE PLATE	1
	62 123 05-S	TUBE OIL PICK-UP	1
	M-645016-S	SCREW FLG THD FRM M6X1.0X16	1
	62 237 02-S	CLAMP	1
	62 030 04-S	BEARING CRANKSHAFT (PTO)	1
	25 139 74-S	PLUG PIPE 1/2 NPTF SQ CTSK	2
	62 032 16-S	SEAL OIL	1
	62 445 04-S	STRAP LIFTING	1
	62 086 07-S	SCREW FLG M8X1.25X50	14
	52 099 08-S	SWITCH OIL PRESSURE	1
	62 123 15-S	KIT DIPSTICK TUBE	1
	62 038 02-S	DIPSTICK	1
	24 153 08-S	O-RING	1
	62 393 01-S	PUMP ASSEMBLY OIL/GEROTOR	1
	62 153 04-S	O-RING OIL PUMP HOUSING	1
	62 081 08-S	OIL PUMP ASSYUSE DISC.	1
	62 063 14-S	BAFFLE RELIEF VALVE	1
	M-639025-S	SCREW,FLG M6X1.0X25 USE 25 086 294-S	3
	62 041 21-S	GASKET OIL PAN	1
	62 594 02-S	COOLER OIL ASSEMBLY	1
	62 326 10-S	HOSE OIL RETURN	1
	25 431 16-S	SLEEVE USE 25 431 12-S	1
	25 237 02-S	CLAMP	4
	24 153 01-S	O-RING OIL PICK-UP	6
	24 294 12-S	FITTING 90 DEG. BARBED	1
	62 029 04-S	ADAPTER HORIZONTAL OIL FILTER	1
	25 597 05-S	SEALANT LOCTITE NOT ILLUSTRATED	1

STARTING SYSTEM



Starting System 7-62-1

Ref #	Part	Description	Qty
	M-841080-S	NUT FLG M8X1.25	1
	25 098 09-S	STARTER USE 25 098 11-S (SERVICE WITH 25 086 113-S, 25 086 113-S, 25 755 33-S, 25 141 05-S, 25 221 01-S)	1
	M-839080-S	SCREW USE M-851080-S	2
	25 435 06-S	KIT SOLENOID (includes 25 086 113-S)	1
	25 086 113-S	SCREW EXTERNAL TORX HEAD	3
	25 755 33-S	KIT STARTER PINION (includes 25 141 05-S)	1
	25 141 05-S	RING RETAINING	1
	25 221 01-S	KIT BRUSH HOLDER	1